

TEST REPORT

Report No.: AZT032011190025C-010

Page 1 of 6

Applicant : Tyco Safety Products (Shanghai) Co., Ltd.
Address : Zone B, Building 2, 88 Wansong Road, Shuyuan Town, Pudong New District,
Shanghai, China
Manufacturer's name : Tyco Safety Products (Shanghai) Co., Ltd.
Address : Zone B, Building 2, 88 Wansong Road, Shuyuan Town, Pudong New District,
Shanghai, China

Report on the submitted sample said to be:

Sample Name : IP CAMERA
Trade Mark : TYCO
Tested model : ISV-X02N003S
Series models : ISA-X02N005SAF, ISA-X04N005SAF, ISV-X02N004S, ISV-X02N005SAF,
ISV-X04N005SAF
Sample Size : 164mm*110mm*120mm
Sample Weight : 1232g
Country of Origin : China
Testing Period : October 19, 2020 ~ October 28, 2020
Date of issue : October 28, 2020
Results : Please refer to next page(s).


TEST REQUEST


Waste electrical and electronic equipment (WEEE) Directive: 2012/19/EU

CONCLUSION

PASS

Signed for and on behalf of AZT



Suez Su
Shenzhen AZT Technology Co., Ltd.
深圳安正检测技术有限公司No.513, 514, 808, Huaide Yinshan Building, 107 National Road, Fuwei Community,
Fuyong Street, Baoan District, Shenzhen, Guangdong, China
中国 广东省 深圳市宝安区福永街道福围社区 107 国道旁怀德银山大厦 513, 514, 808
Tel: 0755-23501189; Fax: 0755-23597514; Http: www.azt-tech.com

TEST REPORT

Report No.: AZT032011190025C-010

Page 2 of 6

REQUIREMENT OF RECYCLING AND RECOVERY RATE

According to article 11 and Annex III, below minimum target of Recycling and Recovery rate should be met after 15 August 2018

Category	Product Type	Minimum Recycling Rate	Minimum Recovery Rate
1	Temperature exchange equipment	80%	85%
2	Screens, monitors and equipment containing screens having a surface greater than 100cm ²	70%	80%
3	Lamps	80%	70%
4	Large equipment(any external dimension more than 50cm) including, but not limited to.	80%	85%
5	Small equipment(no external dimension more than 50cm) including, but not limited to.	55%	75%
6	Small IT and telecommunication equipment(no external dimension more than 50cm)	55%	75%

Recycling & Recovery Rate are calculated as following formulas:

$$\text{Recycling Rate} = \frac{\text{Recycling Weight}}{\text{Product Total Weight}} (\%)$$

$$\text{Recovery Rate} = \frac{\text{Recycling Weight} + \text{Energy Recovery Weight}}{\text{Product Total Weight}} (\%)$$

Result of Reuse/Recycling/Recovery Assessment

Reuse/Recycling/Recovery	Reuse/Recycling (%)	Recovery (%)
Reuse/Recycling/Recovery Targets under the 2012/19/EU WEEE Directive	55	75
Result of Assessment	73.2	78.9
WEEE Requirement Compliance	Pass	Pass

Note: Such products belong to Category 2

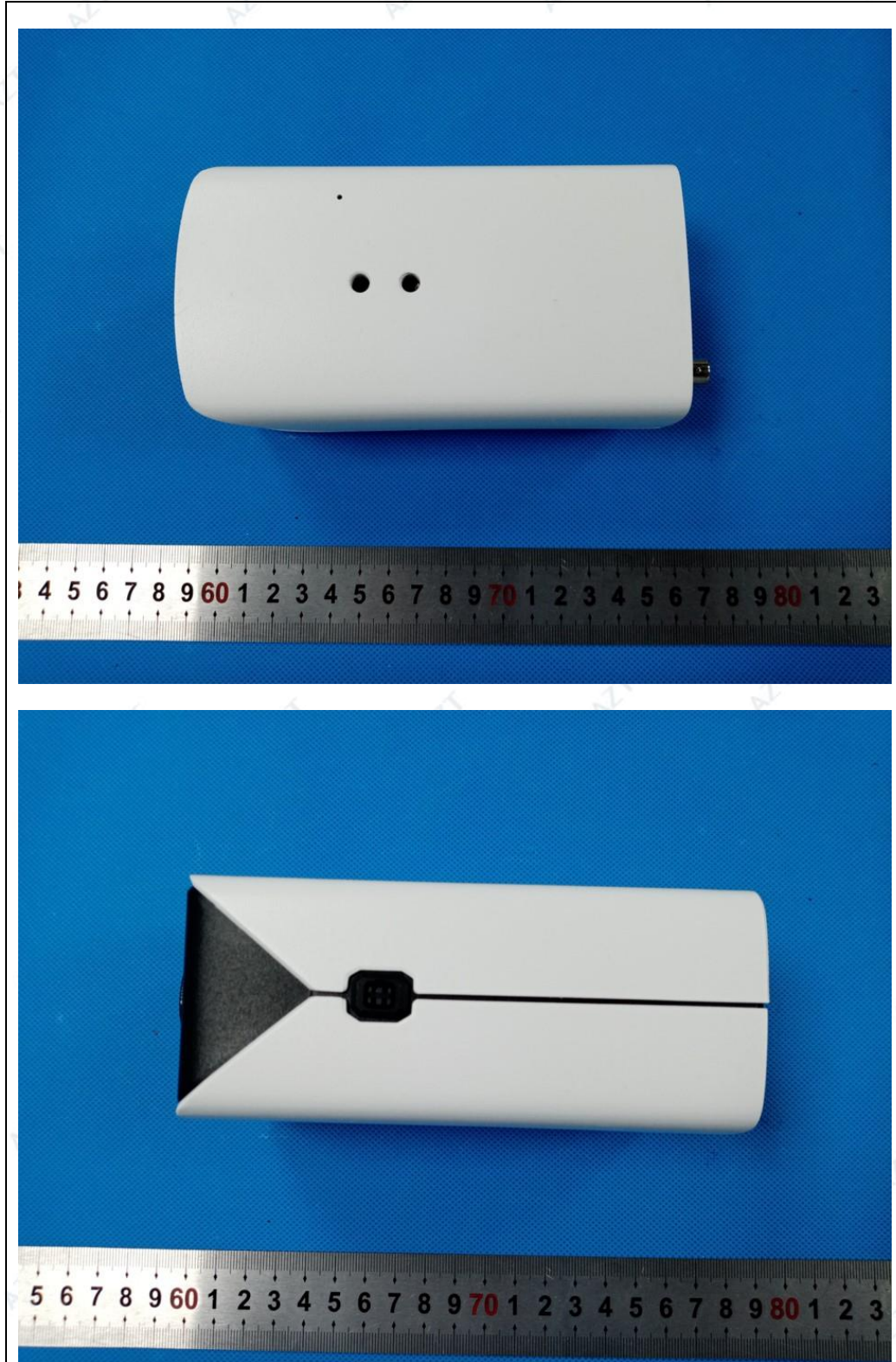


TEST REPORT

Report No.: AZT032011190025C-010

Page 3 of 6

Appearance of the Product



TEST REPORT

Report No.: AZT032011190025C-010

Page 4 of 6



TEST REPORT

Report No.: AZT032011190025C-010

Page 5 of 6

Photo No.	Component/Material	Weight(g)	Percent Weight(%)	Reuse/Recycling (%)	Energy Recovery (%)	Recovery (%)
A1	Plastic	631	51.2	44.1	3.5	47.6
A2	Metal	470	38.2	23.3	1.7	25
A3	PCB	131	10.6	5.8	0.5	6.3
Total		1232	100	73.2	5.7	78.9

Disassembly Procedure

The disassembly procedure taken here is in accordance with the treatment requirements under the Annex II of the WEEE Directive. In addition, to consider economic and efficiency factors, manual operation and disassembly tools have been applied to separate the components and materials from this product in order to simulate the scenario at the treatment facility, and to achieve the objective that the separated components and materials from this product in order to simulate the scenario at the treatment facility, and to achieve the objective that the separated components and materials can be used, recycled and recovered.

Symbol for the marking of electronic equipment



Note:

Due to their insignificant weight and the difficulty of their separation in a manual operation, sticker, solder, paint and printing material

are not included in this assessment.

Plastic containing brominated flame retardants is not assessed in the list.

Recycling and Recovery Rate Calculation

Reuse Recycling & Recovery Rate using in the report are calculated as following formulas:

Reuse & Recycling Rate = (Reuse & Recycling Weight) / (Product total Weight) (%)

Recovery Rate = (Reuse & Recycling Weight + Energy Recovery Weight) / (Product Total Weight) (%)

Total weight of the product is including the main product is including the main product and accessories



TEST REPORT

Report No.: AZT032011190025C-010

Page 6 of 6

ANNEX VII of WEEE Directive

Selective treatment for materials and components of waste electrical and electronic equipment:

- Polychlorinated biphenyls(PCB) containing capacitors in accordance with Council Directive 96/59/EC of 5 December 1997 adapting to technical progress Council Directive 67/548/EEC relating to the classification, packaging and labeling of dangerous substances,
- Components containing radioactive substances with the exception of components that are below the exemption thresholds set in Article 3 of and Annex I to council Directive 96/29/Euratom of 13 May 1996 laying down basic safety standards for the protection of the health of workers and the general public against the dangers arising from ionizing radiation
- Electrolyte capacitors containing substances of concern(height>25mm, diameter >25mm or proportionately similar volume)

Recommendations for WEEE Directive Compliance

- In order to avoid the product not meeting the reuse/recycling/recovery targets regulated under the WEEE Directive and the regulations of EU countries, the applicant company should, when selecting material and components design, consider they can be easy to reuse and recycle, this consideration will lessen the impact of the required international environmental directives and also improve the product's competitiveness
- It is recommended that the applicant company, when designing new product, especially where components and material have a large weight ratio, should consider using recyclable materials in order to increase the product's reuse/recycling/recover ration
- The product should apply to the RoHS Directive(Directive 2011/65/EU on the restriction of the use of certain hazardous substance in electrical and electronics equipment), the hazardous substance specification in the Directive should be controlled in the homogenous material of this product

If a product has changed its product design, or materials or components employed, then the product should be reassessed and retested in accordance with the WEEE Directive for reuse/recycling/recovery assessment and RoHS for restricted/banned substances requirements.

